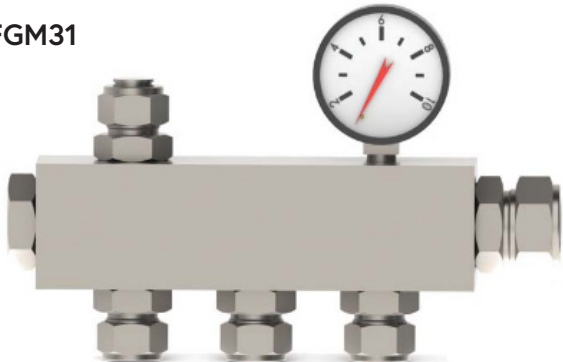
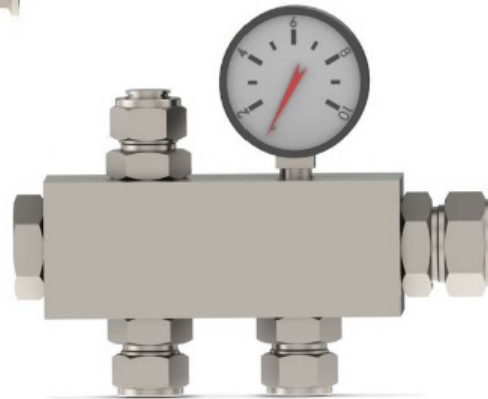


FUEL GAS DISTRIBUTION MANIFOLDS

16FGM31



16FGM21



Features

- Assemble high-pressure piping faster and safer by eliminating unnecessary connections
- Makes the installation footprint smaller
- Facilitates panel and dispenser connections to and from multiple supply lines
- 5-port and 7-port manifolds with 1/4 in. NPT gauge port
- SAE straight thread to Duolok Tube Fittings ensures leak-tight replicable connections
- Instrument gauge port allows system monitoring prior to tools
- Choice of inlet and outlet, types, and sizes

Specifications

- Temperature Range: -40 to 300 °F
- Pressure Range: Up to 6000 psig @ 250 °F
- Body Material: 316 SS
- O-ring Material: Low-Temperature NBR
- End Connections: 1/2-1 in. Duolok Tube Fitting or Tube Stub Adapters
- Meets the requirements of ASTM B31.3

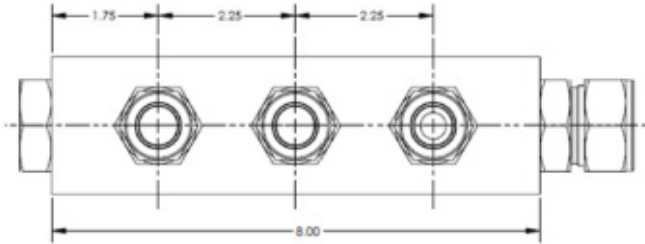
Unique Benefits

Makes connecting multiple supplies lines to dispensers and panels faster and easier
 Low-temperature design • Two manifold sizes

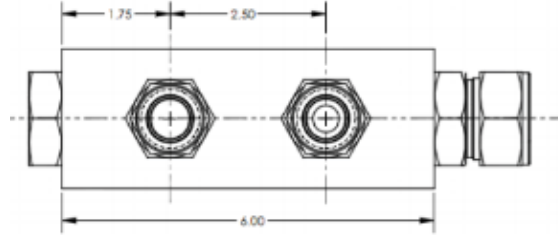


FGM Series Gas Distribution Manifolds

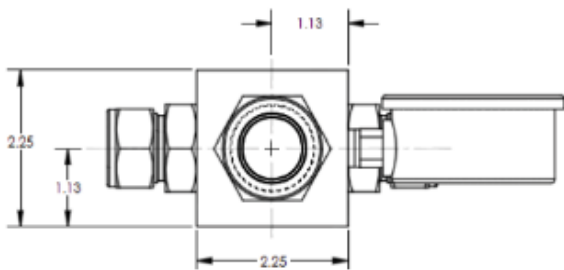
16FGM31



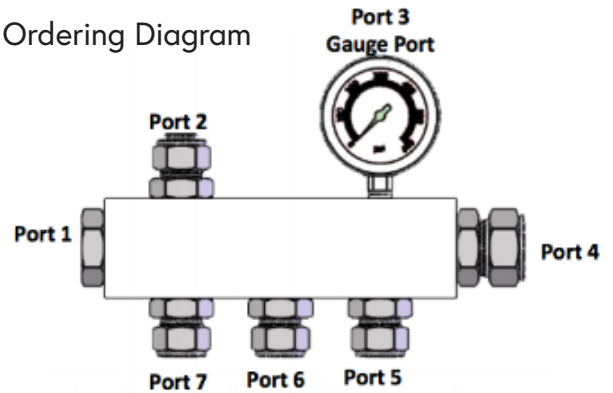
16FGM21



End View



Ordering Diagram



Ordering Instructions

Please use the tables below and the diagram to the right to specify the manifold and end connections for your application in the form below

Connection Type	Designator
Duolok Tube Fitting	D
Duolok Tube Fitting Adapter	DA
Duolok Fitting Cap	DCP
Port Plug	PP

Connection Size	Designator
1/2	8
3/4	12
1	16

Gas Manifold Ordering Form							
Manifold	Port 2	Port 2	Port 3*	Port 4	Port 5	Port 6	Port 7
Example 16FGM21	PP16	DCP12	4PP	D16	D12	D12	
16FGM21							
16FGM21							

*Gauge Ports are prepared to receive 1/4 in. NPT connections. If no gauge is installed, specify a 1/4 in. pipe plug part number ISST4PP

A Refreshingly New Idea for Clean Fuel Transportation

1333 Highland Road, Suite P | Macedonia OH 44056 | 330.998.7380 | insight-fuel.com